



Summary of Monthly Operations – May 2011

General

January 2011 marked the one year anniversary for full operations of Phase 1 of 95 Express. The format of this report will remain as modified a year ago. In total, the 95 Express Lanes:

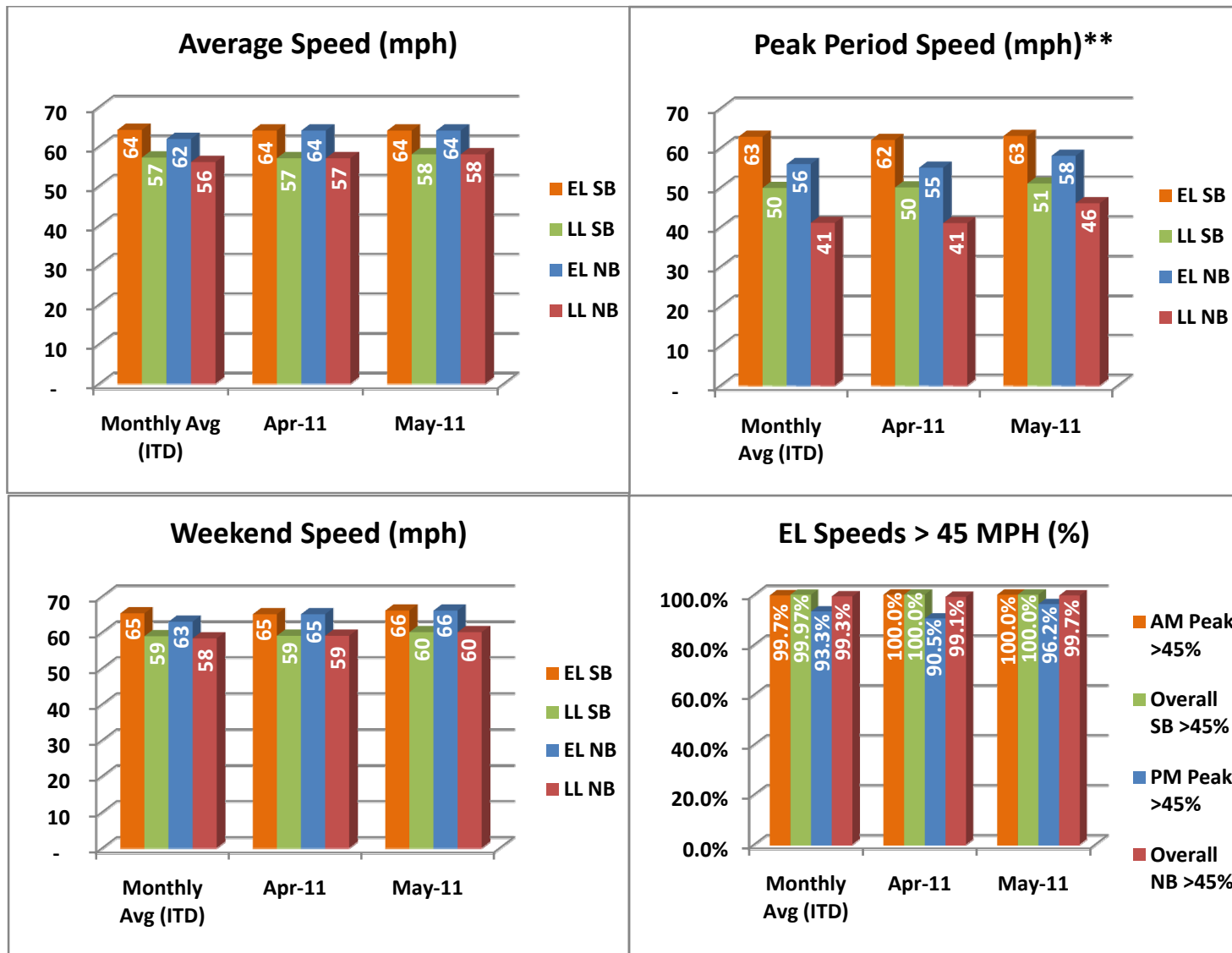
- ✓ Serviced 1,672,214 vehicle trips in May 2011 (8.48 million trips in 2011 to date), bringing the total since opening (December 5, 2008) to approximately 33.6 million trips.
- ✓ Had estimated monthly toll revenue of \$1.29 million in May 2011 (\$6.94 million in revenue in 2011 to date), bringing the total revenue to date to approximately \$25.7 million.
- ✓ Increased to a total of 8,635 registered vehicles.

<u>May 2011 Statistics</u>	<u>Southbound</u>			<u>Northbound</u>		
Trips	837,518			834,696		
Revenue	\$660,358.20			\$629,946.16		
Tolls						
- Range	\$0.00 - \$4.00			\$0.00 - \$5.50		
- Avg. Weekday	\$1.04			\$1.00		
- Avg. Peak Period**	\$1.85			\$2.12		
- Avg. Weekend	\$0.25			\$0.26		
- Avg. Off Peak	\$0.62			\$0.56		
- 85 th Percentile Weekday	\$2.25			\$2.00		
Volume (veh)	EL	LL		EL	LL	
- Avg. Weekday	30,526	110,666		30,256	100,117	
- Avg. Peak Period**	8,572	19,964		8,162	18,460	
Speed (mph)	EL	LL	Δ	EL	LL	Δ
- Avg. Overall	64	58	6	64	58	6
- Avg. Peak Period**	63	51	12	58	46	8
Operated Above 45 MPH	100.0%			99.7%		
Remained Open to Motorists	95.3%			95.2%		
Closed due to Planned Construction	3.5%			3.4%		
Closed due to Non-recurring Events	1.3%			1.5%		
<i>EL (Express Lanes); LL (Local Lanes)</i>						
<i>**Peak Period is defined as 6-9 AM (southbound) and 4-7 PM (northbound).</i>						



Operations/Traffic Statistics - Speed Data

** Peak Period is defined as 6-9 AM (southbound) and 4-7 PM (northbound).

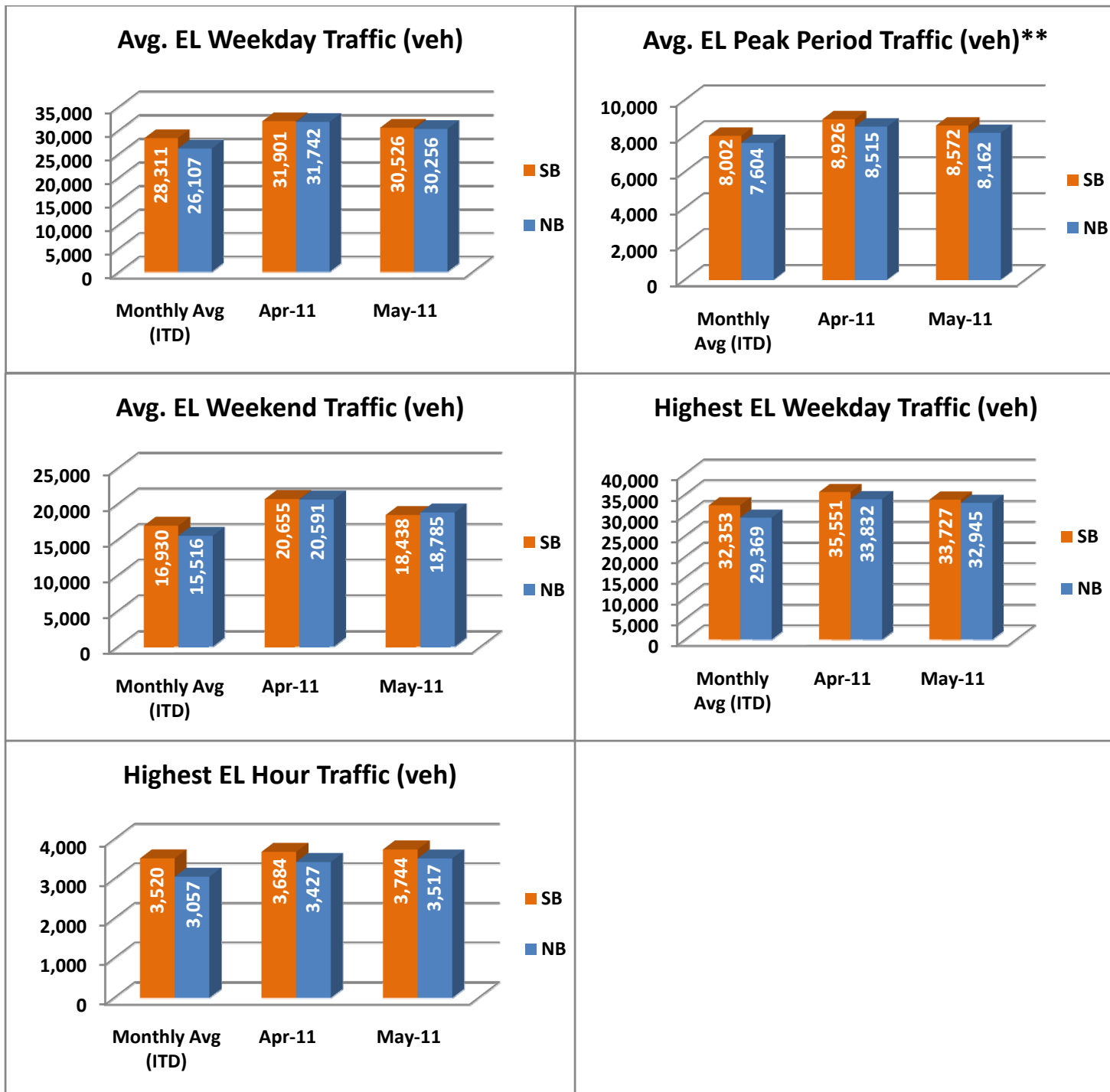


NOTE: ITD = Inception to Date



Operations/Traffic Statistics - Volume Data

** Peak Period is defined as 6-9 AM (southbound) and 4-7 PM (northbound).

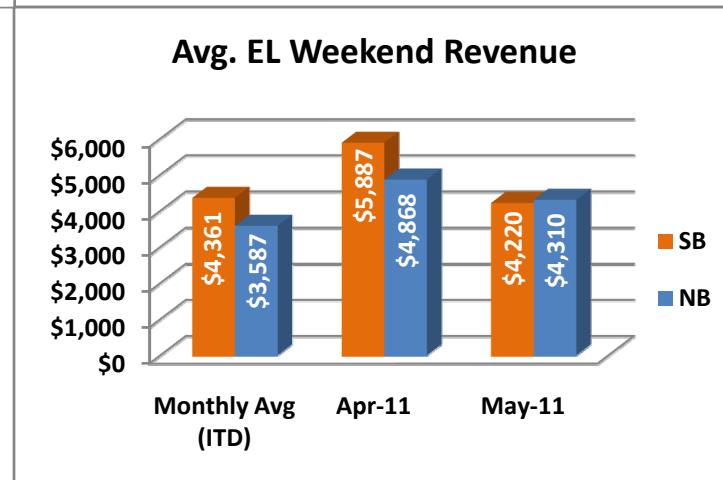
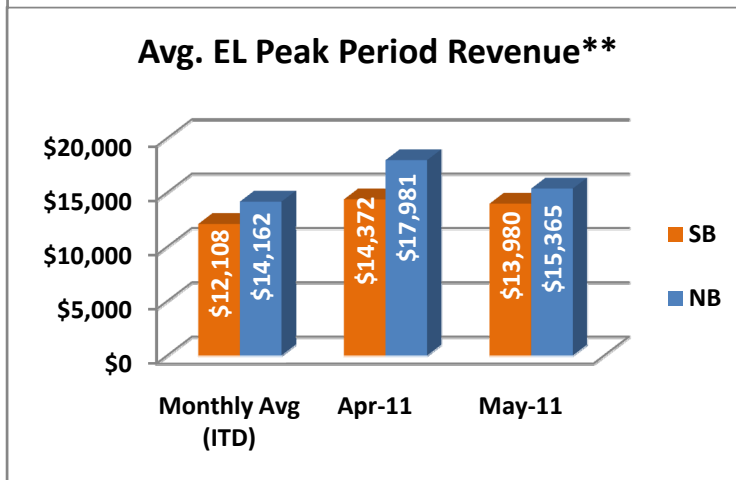
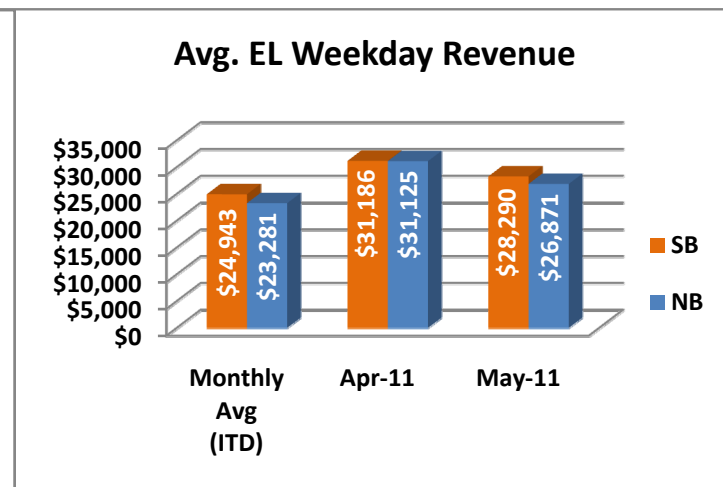
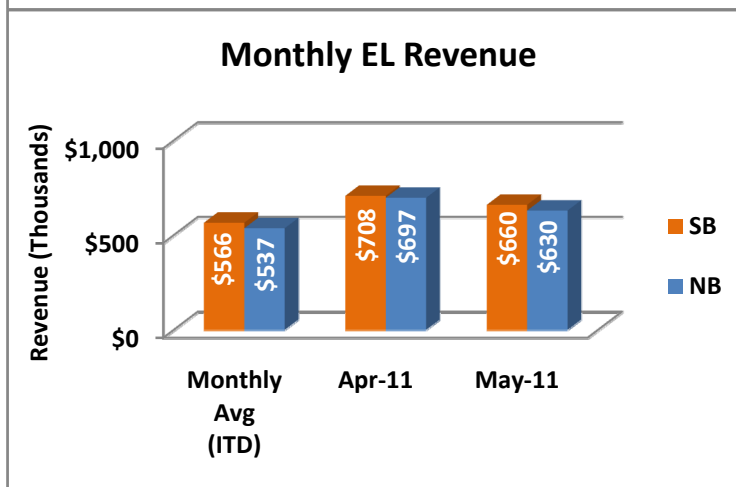
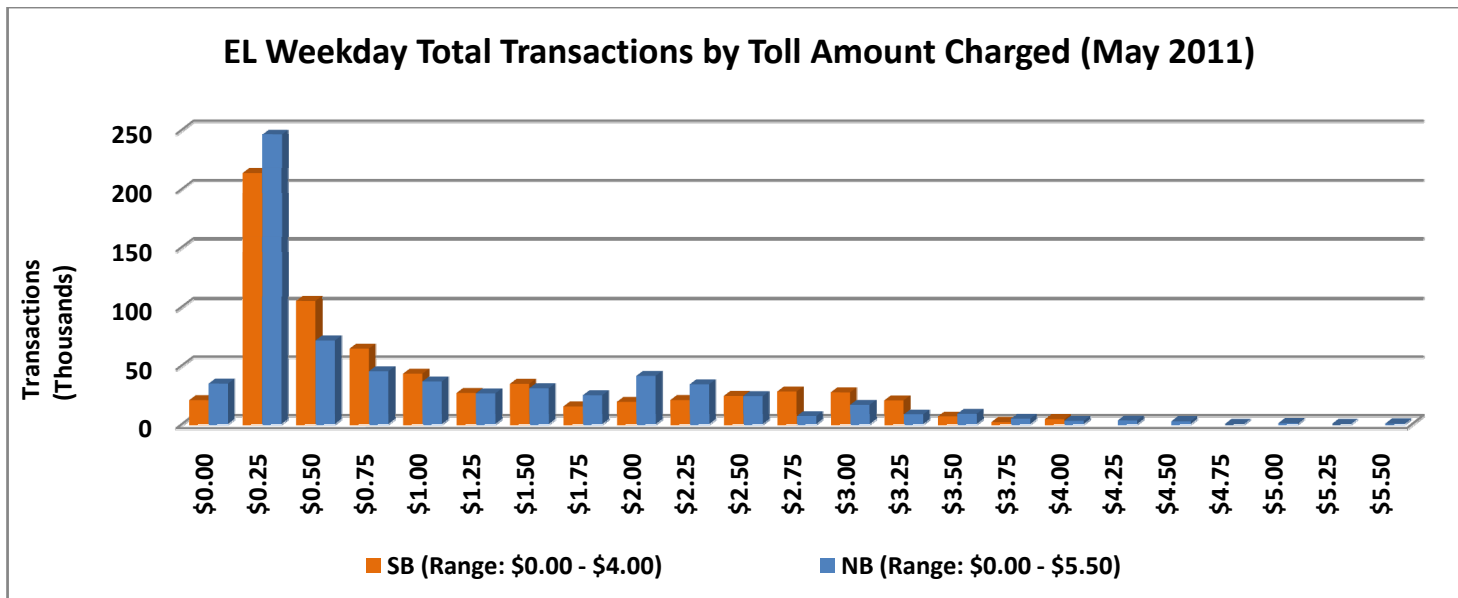


NOTE: ITD = Inception to Date



Revenue/Tolls Statistics

** Peak Period is defined as 6-9 AM (southbound) and 4-7 PM (northbound).

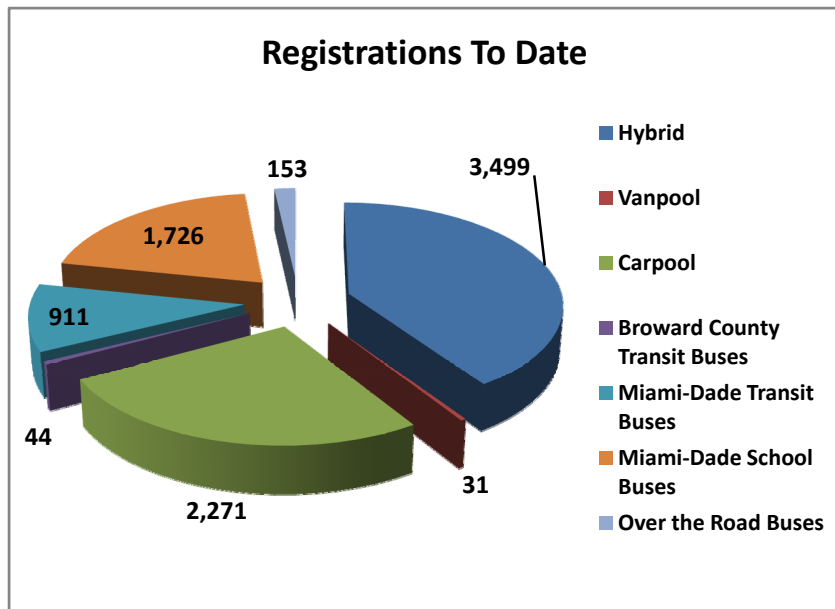


NOTE: ITD = Inception to Date

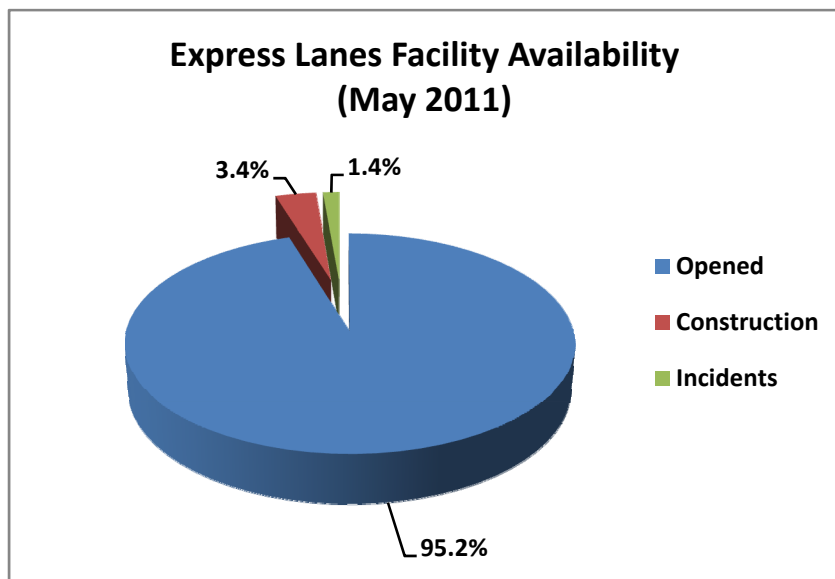


Registrations—Toll Exempt Trips

The total registrations through May 2011 increased to 8,635. *Toll Exempt Trips is not being reported this month due to uncertainties with the transit data. This is currently being investigated and will be reinserted upon confirmation.*



Facility Availability



The entire 95 Express Lanes (both directions) were open to motorists 95.2% of the time, while closed 3.4% due to planned construction and 1.4% due to non-recurring events.